

product description: The elbow 90° is used to bend cable trays running through JUPITER cable trays or cable ladders by 90° in a horizontal direction. From the width of 400 mm the outer right angle of the side walls is replaced by skewed cut. To fix the connection use the bolt NSM 6X10. To protect the cables, the bolt head is inside the cable tray. A bolt with a GMT surface finish is used for a tray with F and ZM surface finish. These items can also be ordered in a varnished version.

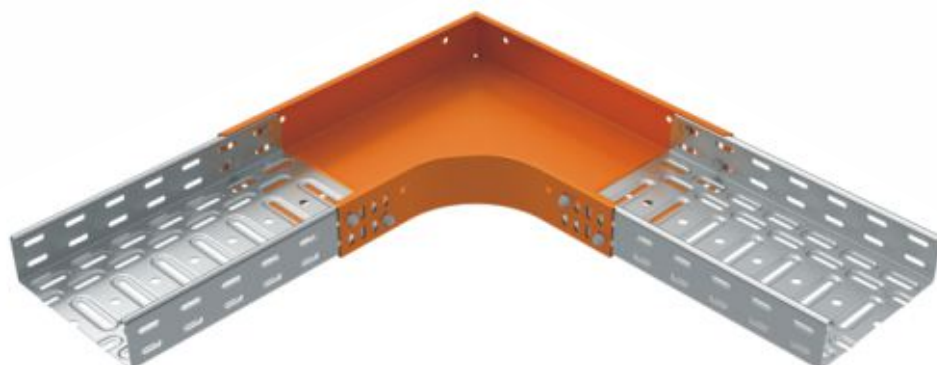
surface finish: S - Pre-Galvanized according to EN 10346, EN 10143, zinc-layer 15-27 µm
 F - Hot Dip Galvanized according to ČSN EN ISO 1461, zinc-layer 45 µm (min. 35 µm)
 ZM - galvanized steel with admixture of magnesium and aluminum according to EN 10346, EN 10143, protective layer 18-31 µm

sales amount: 1 pc

meets the requirements: ČSN EN 61537:02

classification : ČSN 73 0895 P 90-R
 DIN 4102-12 E 90
 STN 92 0205 PS 90
 Fire classification depends on the specific conditions of the cable tray, detailed in the catalog Systems with maintained functionality in fire

storage: ČSN EN 60721-3-1



type number	for width of cable tray (mm)	for height of cable tray (mm)	B (mm)	thickness of metal sheet (mm)	weight (kg/pc)	amount of bolts for connection (pc)	🔥
O 90X35X50_S	50	35	253	0,8	0,49	8	
O 90X35X50_F	50	35	253	0,8	0,56	8	
O 90X35X75_S	75	35	278	0,8	0,59	8	
O 90X35X100_S	100	35	303	0,8	0,69	8	
O 90X35X150_S	150	35	353	0,8	0,93	8	
O 90X35X200_S	200	35	403	1,0	1,45	10	
O 90X35X300_S	300	35	503	1,0	2,25	10	
O 90X60X50_S				0,8	0,60		🔥
O 90X60X50_F	50	60	253	0,8	0,70	8	🔥
O 90X60X50_ZM				0,75	0,57		🔥
O 90X60X75_S	75	60	278	0,8	0,71	8	🔥
O 90X60X100_S				0,8	0,82		🔥
O 90X60X100_F	100	60	303	0,8	0,95	8	🔥
O 90X60X100_ZM				0,75	0,78		🔥
O 90X60X150_S				0,8	1,07		🔥
O 90X60X150_F	150	60	353	0,8	1,24	8	🔥
O 90X60X200_S				1,0	1,64		🔥
O 90X60X200_F	200	60	403	1,0	1,90	10	🔥
O 90X60X200_ZM				1,0	1,64		🔥
O 90X60X300_S				1,0	2,48		🔥
O 90X60X300_F	300	60	503	1,0	2,87	10	🔥
O 90X60X300_ZM				1,0	2,48		🔥
O 90X60X400_S				1,0	3,03		🔥
O 90X60X400_F	400	60	603	1,0	3,52	12	🔥
O 90X60X400_ZM				1,0	3,03		🔥
O 90X60X500_S	500	60	703	1,0	4,01	12	🔥
O 90X60X500_ZM				1,0	4,01		🔥
O 90X60X600_S	600	60	803	1,2	6,14	12	🔥
O 90X85X100_S	100	85	303	0,8	1,03	16	
O 90X85X150_S	150	85	353	0,8	1,30	16	
O 90X85X200_S	200	85	403	1,0	1,91	18	
O 90X85X300_S	300	85	503	1,0	2,79	18	
O 90X85X400_S	400	85	603	1,0	3,35	20	
O 90X110X150_S	150	110	353	0,8	1,40	16	🔥
O 90X110X150_F				0,8	1,64		🔥
O 90X110X200_S				1,0	2,06		🔥
O 90X110X200_F	200	110	403	1,0	2,41	18	🔥
O 90X110X200_ZM				1,0	2,06		🔥
O 90X110X300_S				1,0	2,98		🔥
O 90X110X300_F	300	110	503	1,0	3,48	18	🔥
O 90X110X300_ZM				1,0	2,98		🔥
O 90X110X400_S				1,0	3,55		🔥
O 90X110X400_F	400	110	603	1,0	4,13	20	🔥
O 90X110X400_ZM				1,0	3,55		🔥
O 90X110X500_S				1,0	4,59		🔥
O 90X110X500_F	500	110	703	1,0	5,34	20	🔥
O 90X110X500_ZM				1,0	4,59		🔥
O 90X110X600_S				1,2	6,86		🔥
O 90X110X600_F	600	110	803	1,2	7,98	20	🔥

 **WARNING****Risk of injury from cutting**

Although the cable trays are produced with maximum effort to minimize sharper edges, it is necessary to wear protective gloves to carry, grip and work with cable elements.

Electricity injury

As individual components of cable management systems are made of electrical conductive material, it is essential not to work with a system near live electrical parts. Infringement of the safety regulations may cause serious injury of health or death.

Safe Use

Under normal and foreseeable conditions of use, there are no risks to consumers, provided that proper installation and usage are carried out in accordance with the installation manual.

recycling codes:



elbow 90°