

product description: Electrical wiring tubes are suitable for creating cable trays with maintained functionality during fires. They are installed horizontally on the wall or ceiling.

OMEGA clamps are used to attach them to the base material, installed max. 1,200 mm apart.

For connection of pipes it is necessary to order steel couplings 313/3 - 342/3, which replace the already supplied couplings, supplied with pipes.

One cable may be installed into each electrical wiring tube; the cable diameter must not exceed the max. tube cross section used, i.e. 60%.



surface finish: S - Pre-Galvanized, zinc-layer 15 - 27 µm
 F - Hot Dip Galvanized, zinc-layer 50 - 100 µm
 EOZ - powder coating, black color RAL 9005

sales amount: á 3000 mm

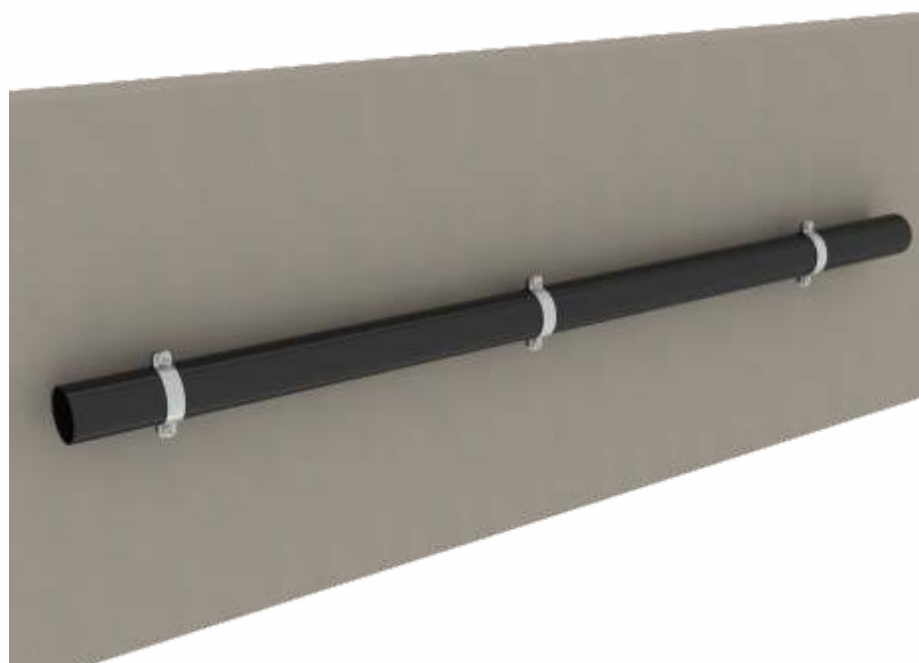
certification: EN 61 386-1 ed.2

classification: ČSN 73 0895 P 90-R
 DIN 4102-12 E 90
 STN 92 0205 PS 90

Fire classification is depend on the specific conditions of the cable tray, detailed in the catalog Systems with maintained functionality in fire.

Systems may be supplied with various surface finishes whereas the surface finish does not affect the determined maintained time of operability in fire.

storage: EN 60721-3-1



item number	dn outer Ø (mm)	di min. inner Ø (mm)	wall thickness (mm)	thread	length (m)	weight 1 ks = 3 m (kg)	package (m)
6013_ZNM_S	20,4	18,2	1,1	P13,5	3	1,6	30 / 1200
6016_ZNM_S	22,5	20,3	1,1	P16	3	2,0	30 / 1200
6021_ZNM_S	28,3	25,7	1,3	P21	3	2,7	30 / 750
6029_ZNM_S	37	34,4	1,3	P29	3	3,5	15 / 450
6036_ZNM_S	47	44	1,5	P36	3	5,2	15 / 300
6042_ZNM_S	54	51	1,5	P42	3	6,0	15 / 225
6013_EOZ	20,4	18,2	1,1	P13,5	3	1,6	30 / 1200
6016_EOZ	22,5	20,3	1,1	P16	3	2,0	30 / 1200
6021_EOZ	28,3	25,7	1,3	P21	3	2,7	30 / 750
6029_EOZ	37	34,4	1,3	P29	3	3,5	15 / 450
6036_EOZ	47	44	1,5	P36	3	5,2	15 / 300
6042_EOZ	54	51	1,5	P42	3	6,0	15 / 225
6013_ZN_F	20,4	18,2	1,1	P13,5	3	1,9	30 / 1200
6016_ZN_F	22,5	20,3	1,1	P16	3	2,1	30 / 1200
6021_ZN_F	28,3	25,7	1,3	P21	3	3,1	30 / 750
6029_ZN_F	37	34,4	1,3	P29	3	4,1	15 / 450
6036_ZN_F	47	44	1,5	P36	3	6,1	15 / 300
6042_ZN_F	54	51	1,5	P42	3	7,0	15 / 225