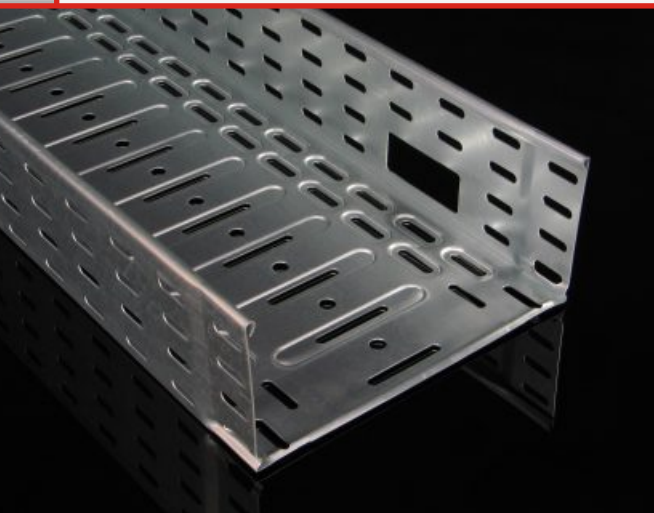
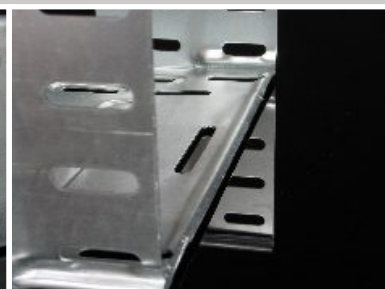
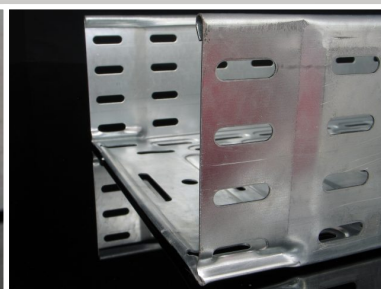


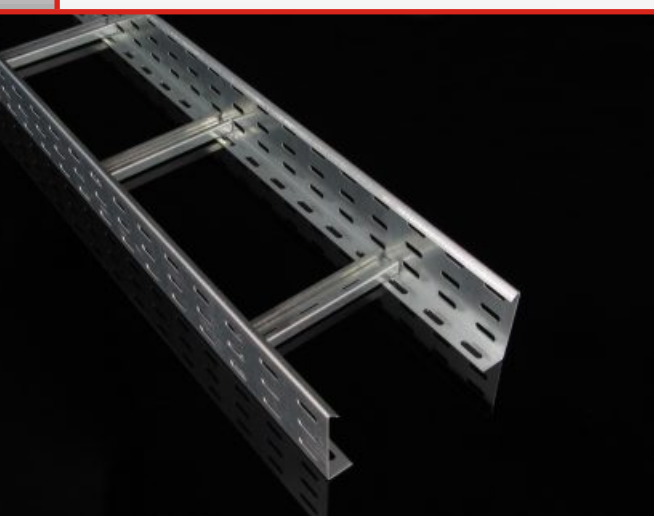
Cable trays JUPITER



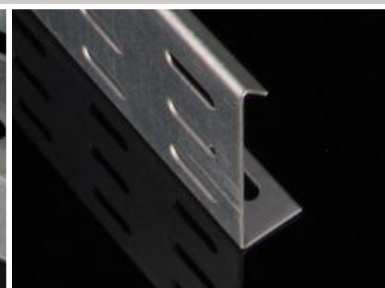
- embossing of the bottom
- openings for cables
- integrated connection
- crosswise pressed projection on the tray and accessories
- lengthwise and crosswise projection of cover
- surface treatment – Sendzimir galvanization
- fire endurance certificate
- dimensions: length of tray: 3 m
height of side: 35; 42; 60; 85; 110 mm
width of tray: 50; 75; 100; 150; 200; 300; 400; 500; 600 mm
thickness of metal sheet of trays: from 0.75 to 1.5 mm
thicknesses of metal sheets of covers: from 0.6 to 1.25 mm
- wide range of accessories and assembly elements



Cable ladders



- perforation of crossbars
- distance between crossbars 300 mm
- perforation of bottom fringe of side-plate
- connection of side-plate with crossbars by the so called forcing through method
- surface treatment – Sendzimir galvanization
- fire endurance certificate
- dimensions: length of ladder: 3 m
height of side: 60; 85; 110 mm
width of ladder: 150; 200; 300; 400; 500; 600 mm
thickness of metal sheet: 1.5 mm



Cable trays MARS



- folded fringe of side-plate
- embossing of the bottom
- integrated connection
- extensive perforation
- crosswise pressed projection on the tray and accessories
- lengthwise and crosswise pressing of cover
- surface treatment – Sendzimir galvanization
- fire endurance certificate
- dimensions: length of tray: 3 m
height of side: 50; 100 mm
width of tray: 62; 125; 250; 500 mm
thicknesses of metal sheets of trays: from 0.75 to 1.5 mm
thicknesses of metal sheets of lids: from 0.6 to 1.25 mm
- special assembly element: supporting profile for clamps of cables



Floor systems KOPOBOX



Sets for floor wiring boxes KOPOBOX for assembly in the concrete and doubled floors

KOPOBOX 57 - determined for modular devices 45 x 45 mm

KOPOBOX 80 - determined for classic and for modular devices 45 x 45 mm

- two tipping flaps for leading cables from the box
- reinforcing of the cover by a metal sheet for high mechanical solidity

Set for concrete floors

- universal floor box KUP (57; 80) + frame of floor box KOPOBOX (57; 80)
- for the height of the concrete layer 57 - 75 mm at KUP 57 and 80 - 95 mm at KUP 80
- the height of the box may be increased by means of levelling set, which serves also for equalization of floor roughness

Set for double floors

- frame of floor box KOPOBOX (57; 80)

